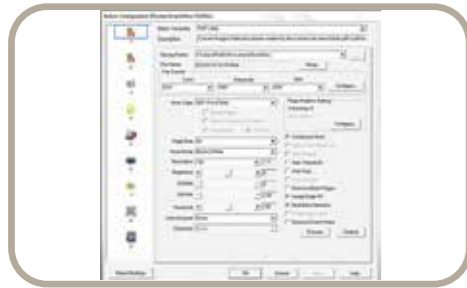


# SmartOffice PT2160

## ❖ SOFTWARE



### DocAction

#### Plustek DocAction

Button utility to simplify document scanning. DocAction enables you to specify your personalized scanning configuration settings and scan documents with the click of a button. Scanned documents are automatically sent directly to Printer, Email, Folder or FTP. DocAction also enables you to scan directly to many imaging and document management applications. DocAction saves scanned documents in all common imaging formats including JPEG, TIFF, and PDF.

## ❖ BUILT-IN OCR



### Plustek OCR

#### Plustek OCR \*

Plustek OCR (powered by ABBYY) helps to convert scanned paper documents, photos, and PDF files into editable formats. With Plustek OCR, you can convert paper documents to editable formats, including Microsoft® Word®, and Excel®, edit resulting documents, and reuse their text and other content.

### Hardware Requirements

CPU: Intel® Core i5 2.5 GHz or higher  
Memory: 4 GB (32 bit Windows) / 8GB (64-bit Windows)  
USB Port: USB 3.0 Port (USB 2.0/1.1 supported)

©2020 Plustek

\* Plustek is registered trademarks of Plustek.

ABBYY™ FineReader™ © ABBYY. OCR by ABBYY. ABBYY and FineReader are trademarks of ABBYY Software, Ltd. which may be registered in some jurisdictions.

Any other products or company names appearing in this document are the trademarks or registered trademarks of the respective companies.



### Specification

Image Sensor	CIS x 2
Optical Resolution	600 dpi
ADF Capacity	1. 100 sheets (A4/ Letter, 70 g/ m <sup>2</sup> or 18 Lbs) 2. 30 sheets (Business Cards, landscape feeding) 3. Plastic Card, Max. thickness under 1.2 mm landscape feeding Note: Maximum ADF capacity varies, depending upon paper weight.
Scanning Speed ( ADF )	60 ppm/ 120 ipm (Color mode, 300 dpi, A4 Portrait) Note: Actual scanning speeds are affected by data transmission, software processing times with USB 3.0 connection and finally by the specification of the pc.
Scanning Area (W x L)	Max: 216 x 5080 mm (8.5" x 200") Min: 13.2 x 13.2 mm (0.52" x 0.52")
Acceptable Paper Weight (Thickness)	27 to 413 g/ m <sup>2</sup> (7.2 to 110 Lbs)
Multi-feed Detection	With ultrasonic technology
Daily Duty Scan ( Sheets )	8,000
Roller Lifetime (Scans)	300,000
Pad Lifetime (Scans)	100,000
Action Button	5 Buttons: Power, Up, Down, Cancel, Scan 9 function keys are all customizable.
Power Supply	24 Vdc/ 1.25 A
Interface	USB 3.0
Net Weight	4.1 Kgs (9.04 Lbs)
Dimensions (W x D x H)	319.9 x 298.2 x 236.6 mm (12.59" x 11.74" x 9.32")
Protocol	TWAIN Compliant
OS	Windows 7 / 8 / 10

# SmartOffice PT2160

**plustek**

SmartOffice Series



## New era of document digitization



The SmartOffice PT2160 has been designed to help office workgroups optimize their workflow. Organize working progress faster with the PT2160's robust feeding functionalities. With reversible friction roller, documents have avoided the risk of multi-feed for precise paper thickness. Scan passport, stapled document and any folded paper easily with a dedicated switch, simply switch from automatic document feeding mode to sheetfed. In addition, empower banking reception workflows and implement information more efficiency with our PT2160 and enhanced button management software-DocAction. Users no longer need to worry about the archiving, they can set up to 9 different scan profiles for different tasks.

## ❖ KEY FEATURES

- **Fast, 60 ppm / 120 ipm scanning in 300dpi with color, grayscale and monochrome mode.**
- **High performance daily duty cycle up to 8,000 sheets**
- **Effective scanning with large Automatic Document Feeder up to 100 pages.**
- **Versatile scanning functionalities, scan from long paper (up to 200") to passport and ID card**
- **Patented asymmetrical paper feeding guide allows smoothly feeding experience while scanning a batch of different size paper**
- **Easy switch based on scanned file and thickness.**

# ❖ FEATURES



## Reversible friction roller

The innovative reversible friction rollers increase the stability of document feeding and the ability of paper separation. It avoids the risk of multi-feed and incorrect result when you scan batch of document/card in different thickness and size.



## Intelligent ultrasonic multi-feeding detection

PT2160 prevents multi-feeds by checking the thickness of documents and detecting overlapping pages with the built-in ultrasonic multi-feeds detection capability.



## Plustek patented asymmetrical paper feeding guide

Asymmetrical paper feeding guides design to accommodate various stacked paper scans sizes for smoother paper handling.



## Ideal for passport, ID card, batch document and folded A3 paper scanning

Dedicated paper feeding button switch from sheet-fed to automatic document feeding, one scanner multiple uses.

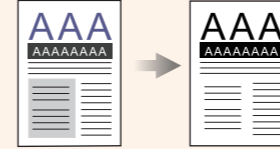


## Switch designed for different paper thickness

Due to the different types of papers for every industry, PT2160 provides a thickness switch for more reliable scanning, including prevent the thin paper damaged from friction roller and the risk of paper jam.

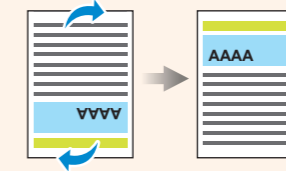
### 1 Auto Threshold

Automatically threshold the current image into a binary black and white image.



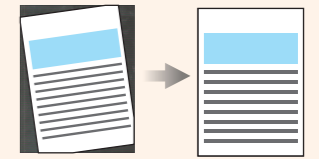
### 2 Auto Rotate

Automatically rotates document based on the contents of the document.



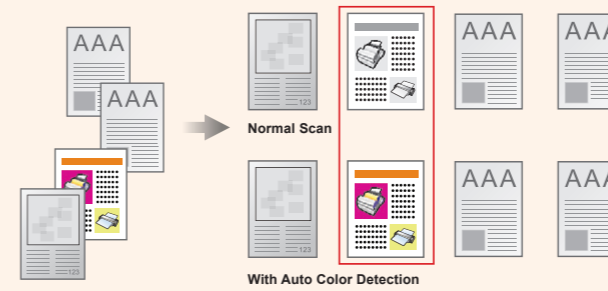
### 3 Auto Crop & Deskew

Automatically straightens and crops image to the documents actual size.



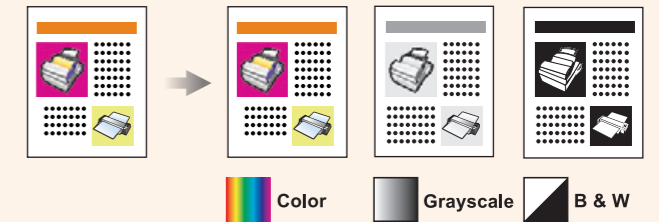
### 4 Auto Color Mode

Automatically detects document color and scans document in color, grayscale or black & white mode.



### 5 Multi-Image Output

Scans and saves documents in 2 or 3 color modes at same time.



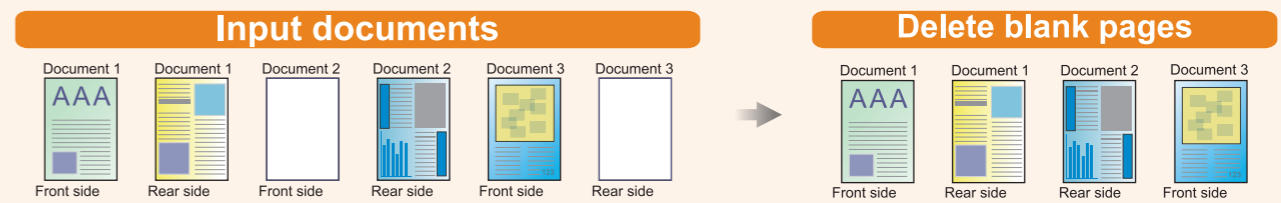
### 6 Color Dropout

Removes red, green or blue color when scanning forms.



### 7 Blank Page Removal

Automatically removes blank pages without manual editing.



**60** PPM  
**120** IPM

fast duplex scanning at speeds up to 60 pages per minute in color mode

**100** pages

Effective scanning with large Automatic Document Feeder up to 100 pages

**PASSPORT**

Scans stapled documents or passport. Perfect for vertical applications such as healthcare, pharmacy, accounting, hospitality, etc.

**USB 3.0**

High speed interface and data transfer. Supports USB 3.0 for high speed data transfer between scanner and the computer.

**ID CARD**

Save paper documents as searchable PDFs at the touch of a button and find your information faster

**SEARCHABLE PDF**

Scans embossed rigid cards such as ID cards, insurance cards, drivers licenses and credit cards up to 1.2mm