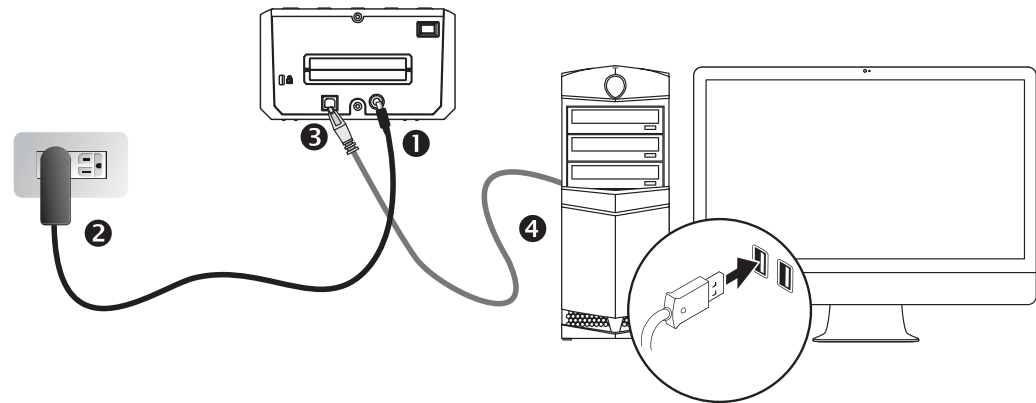


OpticFilm 135 Series Quick Start Guide



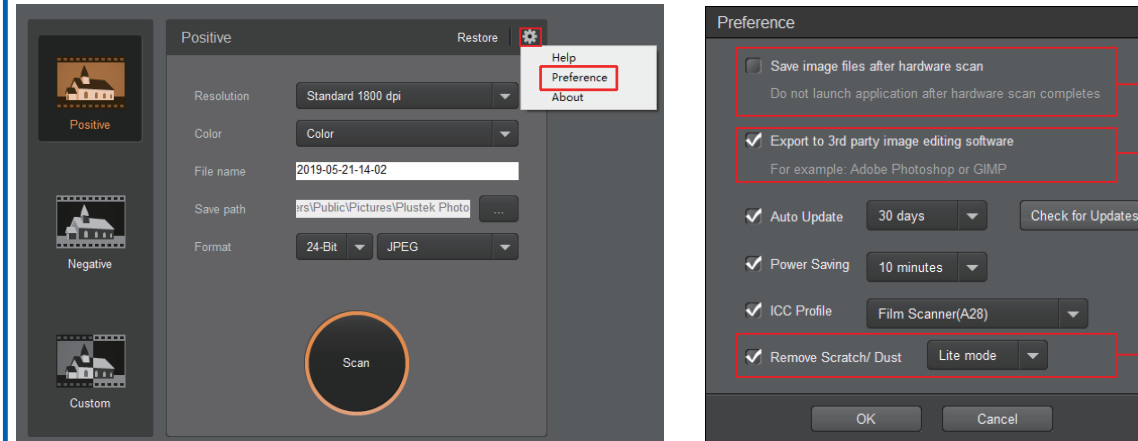
Get started

1 Connect and Install



Please visit www.plustek.com/OpticFilm135i/QuickStart to download the software and driver and quick installation guide for your newly purchased Plustek OpticFilm135i film scanner.

2 Preference Settings



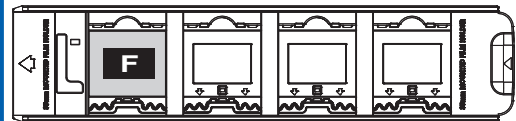
Activate this checkbox if you do not want the QuickScan Plus program to launch after scanning images.

The scanned images will be opened directly on 3rd party image editing software. ***Please refer to FAQ part on the rear side of THIS guide.**

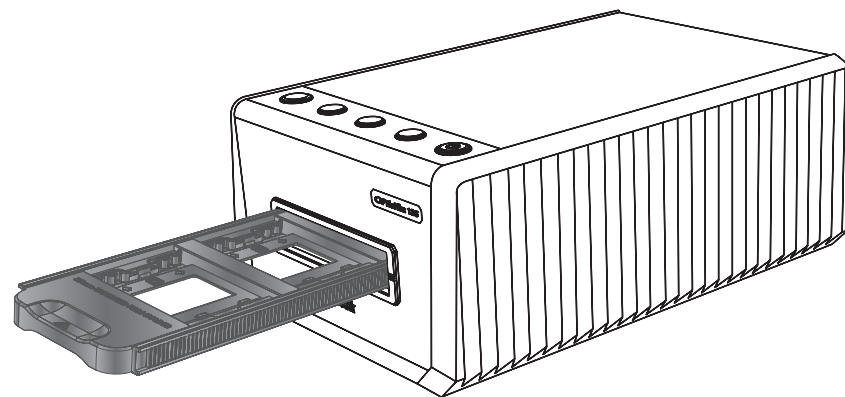
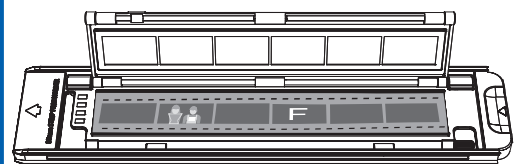
This function is only for the infrared built-in model.

3 Insert the Film Holder

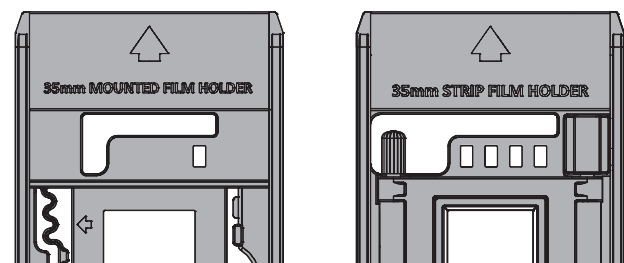
35mm Mounted Film Holder



35mm Strip Film Holder



- The film holder should be able to be inserted into the scanner smoothly. Do not push the film holder hard.
- On the top side of the film holder you can see '35 mm Mounted Film Holder' or '35 mm Strip Film Holder'. Always keep this side up for correct scan results.



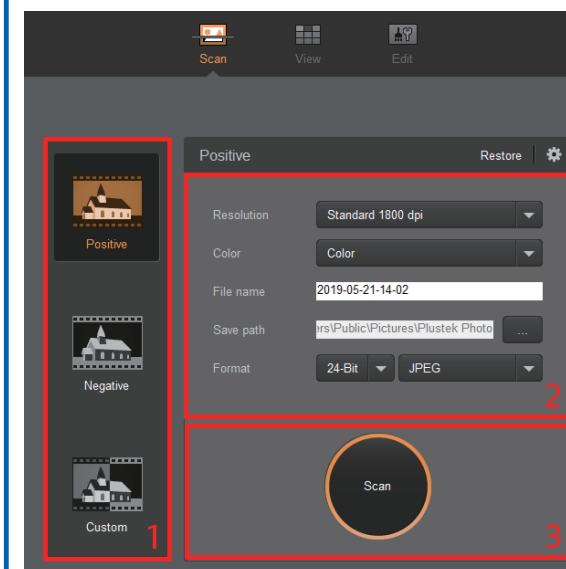
4 Scan Your Film

You may do one of the following:

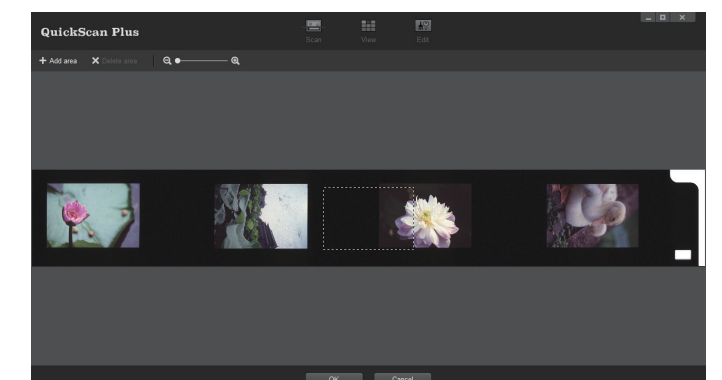
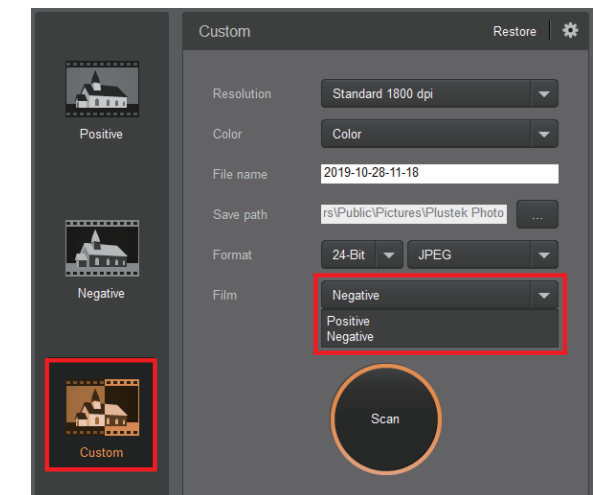
- Scan with [Positive] or [Negative] or [Custom] button



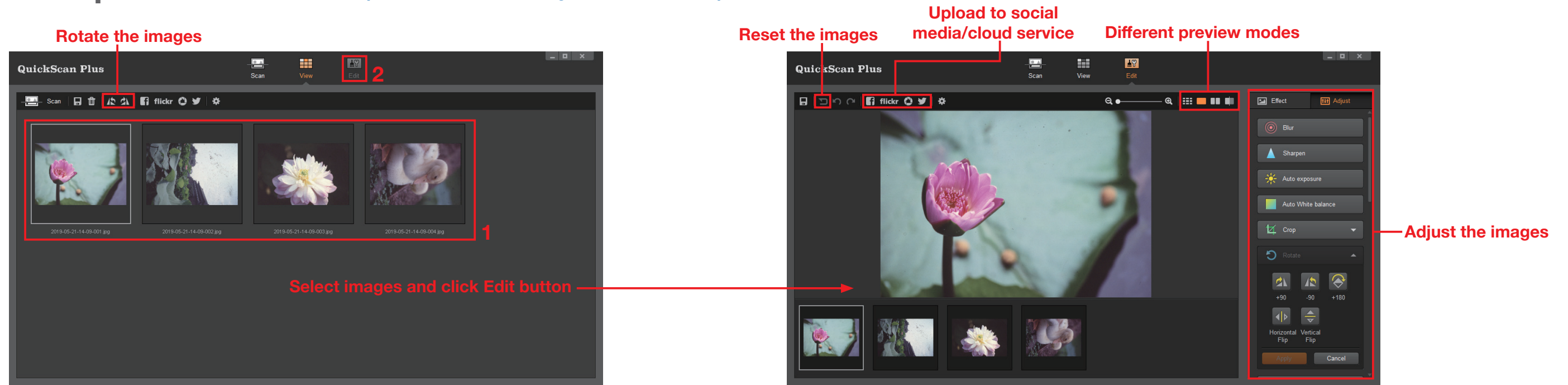
- Scan with QuickScan Plus Application



! You may select Custom scan mode to adjust the cropping areas if necessary.



Edit and Upload *Detailed information please refer to the user guide and online help

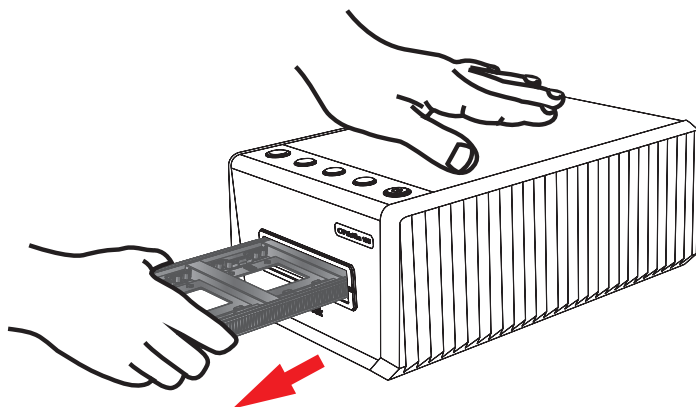


Troubleshooting

1. How to remove dust from negatives and slides?
You may use blower to remove dust on films.
2. Why the scanner buttons are not functioned?
Please make sure the scanner is not in power saving mode, and the QuickScan Plus program is executed.
3. What to do when the film holder is stuck inside the scanner?

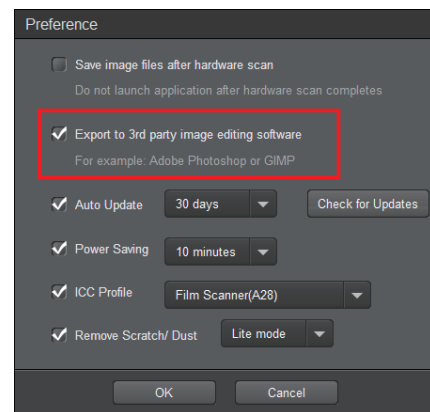
Disconnect and reconnect the power and USB cables to the scanner. The scanner will attempt to eject any inserted film holder automatically when turned on.

If the film holder is not ejected automatically, please eject the film holder by manually pulling it out from the front.

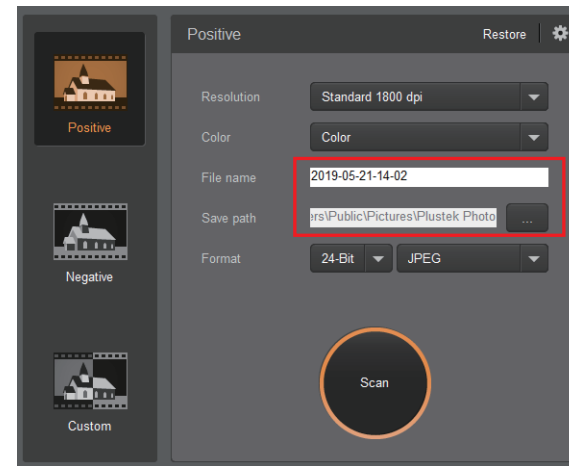
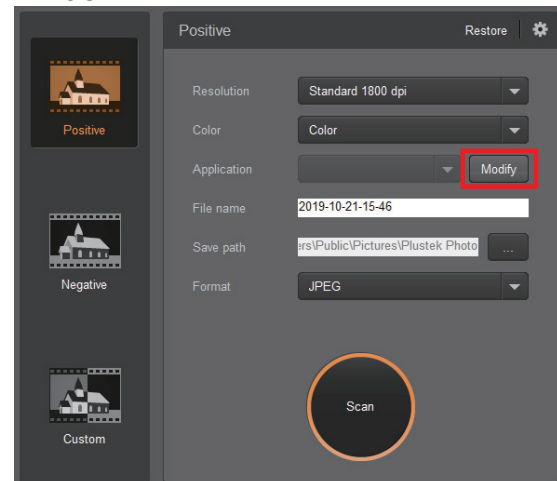


FAQ

1. How to open the scan images in 3rd party image editing software?
Please activate **Export to 3rd party image editing software** option in **Preference** dialog.
2. How to modify the file name and the saving folder?
You may modify the file name and the saving folder here



And configure the **Application** settings in the main window.



3. How to select non consecutive images on View screen?
Selected images will be highlighted with a gray rectangle around the images. You may click on one image, hold down the **Command** (Mac) or **Ctrl** (Windows) key and click one or more other images to deselect.

Technical Support

USA / Canada

Service Hours
(Except National Holiday):
Monday to Friday, 9AM to 5:30PM
Pacific Time

Tel.:
714-670-7713

e-mail:
infoUSA@PlustekUS.com

Web:
<https://plustek.com/usa/support/>



Get started