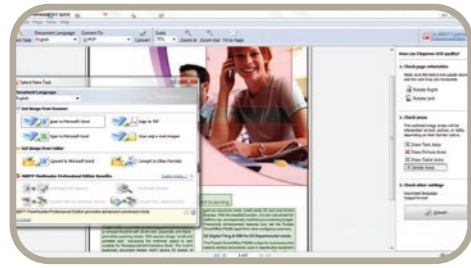


# Plustek PS4080U

## ❖ SOFTWARE



Powered by

**ABBYY®**

**ABBYY FineReader Sprint<sup>[1]</sup>**

Unlocks the data inside paper-based documents, images and PDF files with enhanced accuracy that eliminates the need for retyping and reformatting. Tool that increases your productivity and efficiency which comes with simple user interface and supports recognition up to 183 languages.



**DocAction**

**Plustek DocAction**

Button utility to simplify document scanning. DocAction enables you to specify your personalized scanning configuration settings and scan documents with the touch of a button. Scanned documents are automatically sent directly to Printer, Email, Folder or FTP. DocAction also enables you to scan directly to many imaging and document management applications. DocAction saves scanned documents in all common imaging formats including: JPEG, TIFF, and PDF.

### Hardware Requirements

2.0 GHz CPU processor or higher<sup>[1]</sup>  
 [1] Windows Recommended: 2.8 GHz Intel® Core™ i5 Processor with 4 CPU Cores or higher  
 4 GB RAM minimum (Recommended: 8 GB or more)  
 6 GB of hard-disk space for program installation  
 Display dimensions of 1024x768 or greater

### Specification

Image Sensor	CIS x 2
Optical Resolution	600 dpi
Optical Resolution	LED
Hardware Resolution	600 x 600 dpi
ADF Capacity	1. 100 sheets (A4/ Letter, 70 g/m <sup>2</sup> or 18 Lbs) 2. 30 sheets (Business Cards) 3. Plastic Card, Max. thickness under 1.2 mm. Note: Maximum ADF capacity varies, depending upon paper weight.
Scanning Speed ( ADF )	40 ppm/80 ipm (300 dpi, grayscale mode, A4 Portrait) 40 ppm/80 ipm (300 dpi, B&W mode, A4 Portrait) 40 ppm/80 ipm (200 dpi, color mode, A4 Portrait) 30 ppm/60 ipm (300 dpi, color mode, A4 Portrait) Note: Results may vary depending upon your scanning application, computer processor and system memory.
Scanning Area (W x L)	Max: 216 x 5080 mm (8.5" x 200") Min: 13.2 x 13.2 mm (0.52" x 0.52")
Acceptable Paper Sizes (W x L)	Max: 244 x 5080 mm (9.6" x 200") Min: 50.8 x 50.8 mm (2" x 2")
Acceptable Paper Weight (Thickness)	40 to 220 g/m <sup>2</sup> (10 to 58 Lbs)
Multi-feed Detection	With ultrasonic technology
Daily Duty Scan ( Sheets )	4,000
Roller Lifetime (Scans)	300,000
Pad Lifetime (Scans)	50,000
Action Button	4 Buttons: Up, Down, Scan, Standby 9 function keys are all customizable.
Power Supply	24 Vdc/ 1.25 A
Interface	USB 2.0
Net Weight	2.7 Kgs (5.95 Lbs)
Dimensions (W x D x H)	318.7 x 230.7 x 228.3 mm (12.55" x 9.08" x 8.99")
Protocol	TWAIN Compliant
OS	Windows 7 / 8 / 10 / 11 Linux* <sup>[2]</sup>

[1] ABBYY™ FineReader™ © ABBYY. OCR by ABBYY. ABBYY and FineReader are trademarks of ABBYY Software, Ltd. which may be registered in some jurisdictions. Any other products or company names appearing in this document are the trademarks or registered trademarks of the respective companies.

[2] Linux compatibility is only available for system integrators. Please contact [sales@plustek.com](mailto:sales@plustek.com) for more info.



# Plustek PS4080U

**plustek**

SmartOffice Series

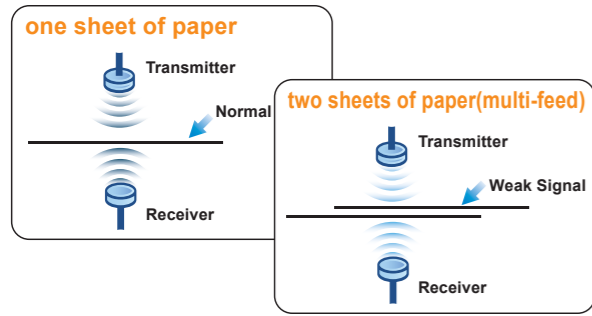
**Fast scanning, best value,  
reliable and affordable  
document scanner**



The Plustek SmartOffice PS 4080U is a departmental class document scanner capable of simplex/duplex scan. With built-in auto-document feeder, it is extremely efficient in performing duplex scan for a stack of double-sided documents. In simplex scan mode the Plustek PS4080U scans up to 40 pages per minute, and in duplex mode, 80 images. The auto-document feeder has a cavernous capacity of 100 sheets. All these features make the Plustek PS4080U scanner an essential part of every digital office.

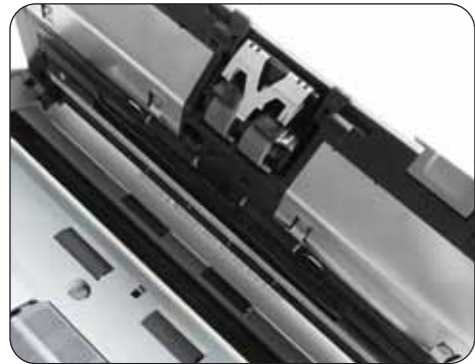
## ❖ KEY FEATURES

- **Ultrasonic multi-feed detection**
- **Scanning speed up to 40ppm/80ipm**
- **Hold up to 100 pages in auto document feeder**
- **A generous daily duty cycle up to 4000 pages**
- **Improved high quality imaging and robust paper handling**
- **No warm up time. Instant on LED illumination**
- **Scans plastic cards, insurance cards, license cards, business cards up to 1.2mm**
- **Scans long documents up to 200" (5080mm)**
- **Single touch scanning to popular formats including Searchable PDF, PDF/A, Word, Excel, JPEG and TIFF**
- **Automatic wake up when documents are placed in the feeder**
- **Automatically image cropping and straightening at full scanning speed**
- **Brightness and contrast controls to customize color output for specific applications**



## Intelligent Misfeed Function

With the built-in ultrasonic multi-feed detection capability, the SmartOffice PS4080U scanner allows you to set overlapped paper by detecting paper thickness between documents. When multi-feed is detected a warning message will be prompted. By default this feature is turned on so that it automatically improves the scanning experience and results. However, in some cases when certain types of paper or media are being scanned, the detector will falsely identify a multi-feed issue and prevent proper scanning of those documents. When scanning papers with labels, sticky notes, taped receipts or plastic cards, the ultrasonic function can be turned off.



## Robust Paper Handling

Combining fast document feeding with the advantage of robust paper handling, the SmartOffice PS4080U is an ideal choice for workgroup who have a demanding workload and limited budget. Plastic and rigid cards such as ID cards, Drivers Licenses, Membership Cards, Insurance Cards and even log documents up to 200" are scanned without additional adjustments or additional set up. The advanced image processing and a high daily duty cycle all add up to the perfect departmental scanning solution for document management, content management and forms processing applications. The SmartOffice PS4080U also features auto wake up that enables users to simply place the paper in the scanner and wake up the scanner from sleep / stand-by mode.



## Exceptionally Responsible

With Plustek's DocAction exclusive software application, users only need to properly place the document on the scanner, the press the "Scan" button. What is best, the scanned image can be directly sent to your desirable destination applications. The features allow you to directly scan to searchable PDF, PDF/A, OCR and BCR, and also access programs seamlessly, such as Excel, Word, Email, Copy and Save to File directly.



## Exceptional Productivity

Operation of the PS4080U is simple with Plustek's DocAction exclusive software application, the Button Manager. Users only need to properly place the document on the scanner, the press the "Scan" button. What is best, the scanned image can be directly sent to your desirable destination applications.

### 1 Auto Threshold

Automatically threshold the current image into a binary black and white image.

### 2 Auto Rotate

Automatically rotates document based on the contents of the document.

### 3 Auto Crop & Deskew

Automatically straightens and crops image to the documents actual size.

### 4 Auto Mode

Automatically detects document color and scans document in color, grayscale or black & white mode.

### 5 Multi-Image Output

Scans and saves documents in 2 or 3 color modes at same time.

### 6 Color Dropout

Removes red, green or blue color when scanning forms.

### 7 Blank Page Removal

Automatically removes blank pages without manual editing.

**40 PPM**  
**80 IPM**

Fast duplex scanning at speeds up to 40 pages per minute in Grayscale mode.

**100 pages**

Effective scanning with large Automatic Document Feeder up to 100 pages.

**BUSINESS CARD**

Digitize paper business cards into easily-managed and sorted contacts, and turn your business cards into information.

**ID CARD**

Scans embossed rigid cards such as ID cards, insurance cards, drivers licenses and credit cards up to 1.2mm. Perfect for vertical applications such as healthcare, pharmacy, accounting, hospitality, etc.

**SEARCHABLE PDF**

Save paper documents as searchable PDFs at the touch of a button and find your information faster.

**CLOUD**

Allows you to easily upload files or scanned images to a compatible server of your choice including Google Docs, Microsoft SharePoint, Box, Dropbox, Twitter and FTP servers.